




ALGIZ 7



Manual



handheld

Accessories

Item	Description	Note
	<p>2 Cell Li-Polymer Battery Packs</p>	<p>Hot-swappable for battery change</p>
	<p>1 CD for System Driver Utility.</p>	
	<p>1 12V Adapter w/ Standard Power Cord. Euro / U.S. Std type, 1.8m</p>	

Item	Description	Note
	<p>1 Recovery DVD for the Operating System (Windows 7).</p>	
	<p>1 Windows 7 Recovery User's Guide.</p>	

Copyright Notice

Copyright © 2010 Handheld Group AB, ALL RIGHTS RESERVED. No part of this document may be reproduced, copied, translated, or transmitted in any form or by any means, electronic or mechanical, for any purpose, without the prior written permission of the original manufacturer.

Trademark Acknowledgement

Brand and product names are trademarks or registered trademarks of their respective owners.

Disclaimer

Handheld Group AB reserves the right to make any product changes without notice, including circuits and/or software described or contained in this manual in order to improve design and/or performance. Handheld Group AB assumes no responsibility or liability for the use of the described product(s), conveys no license or title under any patent, copyright, or masks work rights to these products, and makes no representations or warranties that these products are free from patent, copyright, or mask work right infringement, unless otherwise specified. Applications that are described in this manual are for illustration purposes only. Handheld Group AB makes no representation or warranty that such application will be suitable for the specified use without further testing or modification.

Standard Warranty & Limitations

This product is limited warranted against defects in materials and workmanship for twelve (12) months from the original date of purchase. Accessories and peripherals are limited warranted against defects in materials and workmanship for ninety (90) days from the original date of purchase. If notice is received of such defects during the limited warranty period, the proven defective product(s) will either be repaired or replaced, at the manufacturer's option. Replacement products may be either new or like new.

Handheld does not warrant that the operation of the products will be uninterrupted or error free. If the product is not, within a reasonable time, repaired or replaced to a condition as limited warranted, the customer will be entitled to a refund of the purchase price upon prompt return of the product.

Limited warranty does not apply to defects resulting from (a) improper or inadequate maintenance or calibration, (b) software, interfacing, parts, or supplies not supplied by Handheld, (c) unauthorized modification, or misuse, (d) operation outside of the published environmental specifications for the product, or (e) physical damage due to external causes, including accident, abuse, misuse or problems with electrical power. Removal of the back case voids the limited warranty.

To the extent allowed by local law, the above limited warranties are exclusive and no other warranty or condition, whether written or oral, is expressed or implied, specifically disclaiming any implied warranties or conditions of merchantability, satisfactory quality, and fitness for a particular purpose.

To the extent allowed by local law, the remedies in this limited warranty statement are the customer's sole and exclusive remedies. Except as indicated above, in no event will the manufacturer or its suppliers be liable for loss of data or for direct, special, incidental, consequential (including lost profit or data), or other damage, whether based in contract, tort, or otherwise.

Customer Service

Support for most of the problems are provided as per the following steps! First, visit our website at www.handheldgroup.com to find updated information about the product. Secondly, contact your distributor, sales representative, or our customer service center for technical support if you need additional assistance. You might need to have the following information ready before you call!

- Product's serial number
- Peripheral attachments
- Software (OS, version, application software, etc.)
- Description of complete problem
- The exact wording of any error messages with print screen images

In addition, free technical support is available from our engineers during working hours. We are always ready to give advice on application requirements or specific information on the installation and operation of any of our products. Please do not hesitate to call or e-mail us.

Manufacturer: Handheld Group AB

Address: Handheld Group AB, Kinnegatan 17 A, S-531 33, Lidköping, Sweden

TEL: +46 (0) 510-54 71 70

FAX: +46 (0) 510-282 05

Safety Precautions

Warning!



Always disconnect the power cord from the unit whenever you work with the hardware. Do not plug the device into the power socket when the device's power is on. Sensitive electronic components can be damaged by sudden power surges. Only experienced personnel should open the unit's mechanical housing.

Caution!



Always ground yourself to remove any static charge before touching the CPU card. The electronic devices are very sensitive to static electricity. As a safety precaution, use a grounding wrist strap all the time. Place all the electronic components in a static-dissipative surface or static-shielded bag when they are not in the chassis.

UL Safety Approved



UL Classification: Class I mark: with respect to electronic shock; Fire and hazardous material conforms to the requirements of UL-60950 and CAN/CSA C22.2 No. 601.1.

Power Supply Announcement

The Handheld Rugged Tablet PC Power Supplies include Power Adapter and Battery Pack. The power rating and manufacturer information is listed as below.

Power Adapter	Manufacture: EDAC Power Electronics Co Ltd Model: EA1050C-120 Input Rated: 100-240Vac, 1.8A, 50-60Hz. Output Rated: DC <u> </u> <u> </u> <u> </u> 12V,4.16A.
Battery Pack	Manufacture: JHT energy International Co Ltd Model: RTB-1 Rated: 2600mAh DC 7.4V

Power Notice!



(1) The power cord of the adapter should be earthed.



(2) Power Standby mode: Push the power button for at least 4 seconds to go to standby. (See Chapter 2.1 Turning the Tablet PC On and Off)

Battery Notice!



WARNING:

Do not repair or replace battery, it may cause explosion! Only use the specified battery by following the manufacturer's instruction.

Content

CHAPTER 1 - SPECIFICATION	
1.1 SYSTEM SPECIFICATION	9
1.2 HOW TO USE THE TABLET PC.....	10
1.3 LED INDICATOR.....	11
1.4 USING THE BATTERY PACKS.....	12-14
1.5 THE BATTERY LIGHT SIGNAL INSTRUCTION.....	15
1.5.1 Battery Charging Mechanism:.....	15
1.5.2 Battery Discharging Mechanism:.....	16-17
CHAPTER 2 - USING THE SOFTWARE	
2.1 TURNING THE TABLET PC ON AND OFF	19
2.1.1 Turning on the Tablet PC.....	19
2.1.2 Turning off the Tablet PC.....	19
2.2 HOW TO USE THE SOFTWARE.....	20
2.3 HOT TAB SOFTWARE UTILITY FUNCTIONS	21-25
2.4 GPS SETUP.....	26
2.5 SIM INSTALLATION GUIDE	27-28
2.6 WAN SOFTWARE.....	29
CHAPTER 3 - REGULATORY	
3.1 FCC REGULATORY	31
3.1.1 FCC Compliance Statement	31
3.1.2 FCC Warning	31
3.1.3 FCC RF Radiation Exposure Statement	31
3.1.4 CE Declaration of Conformity.....	31
3.2 CARING FOR YOUR UNIT / SAFE USE.....	32
3.2.1 Maintenance.....	32
3.2.2 Battery Safety Instructions	32
3.2.3 Cleaning	33

Chapter 1

Specification

This User Manual describes the use of an Algiz 7 with Microsoft Windows 7 OS, but other operating systems can also be used. Please contact your supplier for further information.



The Algiz 7 is a compact high performance, low weight rugged Tablet PC designed for outdoor & fieldwork usage. The Algiz 7 can withstand severe environmental conditions including vibration, shock, moisture and temperature variations. The Algiz 7 is suitable for use in harsh environments such as construction sites, warehouses, military, manufacturing and field service. The Algiz 7 tablet pc is delivered with two batteries and an AC power adapter.

This Chapter details the specification for the 7" Handheld Tablet PC Algiz 7.

1.1 System Specification

System	
Processor	Intel® ATOM™ Z530
BIOS	AMI System BIOS
Chipset	Intel US15W
Memory	1 x SODIMM, Max 2GB DDR2 400/533 (Default 2GB)
LAN Controller	Realtek RTL811B Chipset, 10/100/1000 Mbps
Storage	PATA interface support Mini-PCIe interface SSD (Default 64GB)
Audio	Audio out for headset, Micro-in for microphone jack, 1.5W Speaker (Internal)
I/O Connectors	
Left I/O Port	1x Micro-In, 1x Audio Out, 1x Giga LAN, 1x USB, 1x DC Power Jack
Right I/O Port	1x RS232, 1x USB (IP67 Sealed)
In Front Control	
Control Button	1x Power On/Off, 1x Menu, 1x Up, 1x Down, 1x Left, 1x Right 3x Programmable Hotkeys
LED indicator	1x Power Status, 1x HDD Status, 2x Battery Status, 1x Wireless Status
Display Specification	
Size	7" (16:9)
Resolution	1024x600
Brightness	600 nit Maxview Technology
Touch	4 Wire Resistive Touch
Power Management	
Power Input	12 V DC @ 4.16A
Power Consumption	6-9W
Battery	Li-Polymer 7.4V 2S1P, 2600mAh
Adapter	100-240V, 50-60Hz, 12VDC

1.2 How to Use the Tablet PC

This section describes how to use the Tablet PC.



Ref	Component	Description
①	Power On Button	PUSH for 4 seconds to turn on the tablet pc
②	LED Indicator	Shows the Power Status, HDD Status, Left and Right Battery Status, and Wireless Status
③	Menu	Push Menu to show Brightness, Volume, Battery status and Wireless Enable/Disable.
④	F1 – F3 Hotkey	6 programmable Hot-key functions for user to define by application, default first short push key (F1 short) will turn-on help Menu
⑤	Up/Down/Left/ Right/OK Button	Use the UP, DOWN, LEFT, RIGHT and ENTER keys to navigate.

1.3 LED Indicator

LED Term	Indicator Status Description
Power mode	Green: System is On. No Light : System is Off
Battery Status	No Light: fully charged or power on with AC adapter Orange Light: on charging Red Light: Low Battery warning < 3% , or dead battery. No Light: fully charged or power on with AC adapter
Storage Status	Blinking green Light: HDD is reading/writing data
Wifi status	Green Light blinking: Wifi is using No Light: Wifi is not working

1.4 Using the Battery Packs

This section describes the charging the battery pack.

Charging the Battery Pack

Before you use your Handheld tablet PC, you need to charge the battery pack. The battery pack begins to charge as soon as the Handheld tablet PC is connected to the external power source. Please fully charge the batteries before using them for the first time. The new battery packs must be fully charged before the tablet PC is disconnected from the external power source. The battery pack is fully charged when the battery light indicator turns OFF. It takes about a couple of hours to fully charge the battery when the Handheld tablet PC is turned OFF.

Battery Care

The Handheld tablet battery pack, like all rechargeable batteries, has a limit on the number of times it can be fully recharged. Fully draining and charging the battery once a day will make the batteries last over a year, but rechargeable time limits are based on your environmental temperature, humidity, and how your tablet PC is used. The ideal environment temperature range is between 10°C and 29°C (50°F and 85°F).

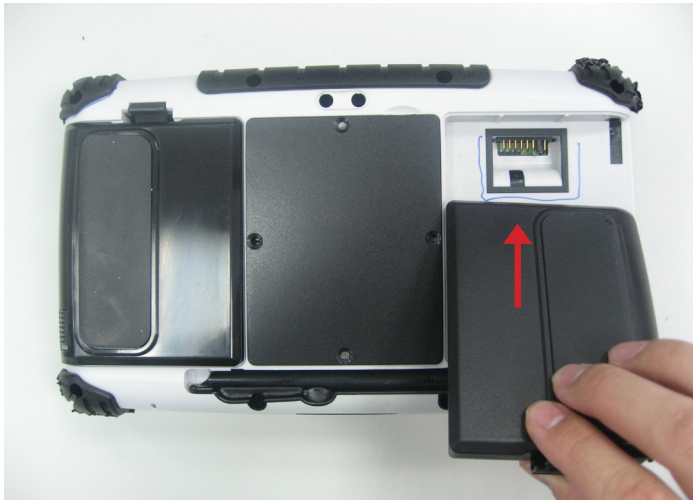
Battery Power System

This tablet PC is designed to work with two removable battery packs placed inside the battery pack compartment. The fully charged battery packs will provide several hours of battery life, which can further be extended by using power management features through the BIOS setup. The system includes a power management software which allows the battery to accurately report the amount of charge percentage left in the battery.

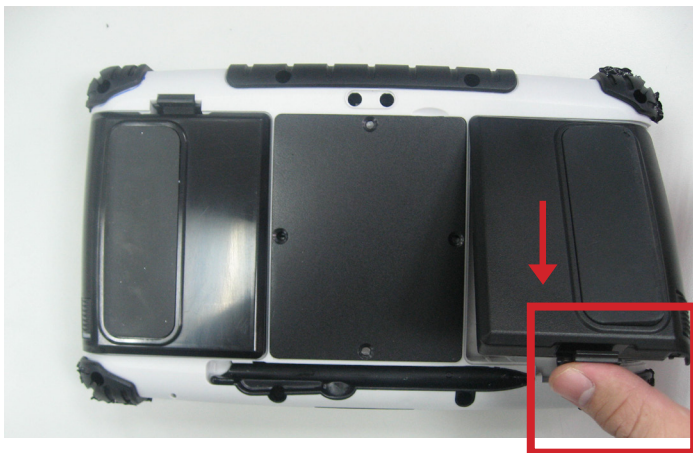
Charging the Battery Pack

You can charge the battery pack by using the power adapter. When the power adapter is plugged in, the inserted battery packs automatically recharges whether your tablet PC is in the ON or OFF mode. It takes about a couple of hours for the battery to be fully charged when the power is OFF but takes twice as long when the tablet PC is in use. When the red charger LED indicator indicates orange, charging is required. The battery is charging when the red LED is solid. When the LED is turned OFF, the battery pack is fully charged.

Insert the battery pack



- ① Insert the battery pack into the battery slot.



- ② Press down the compression lock into the tablet pc.

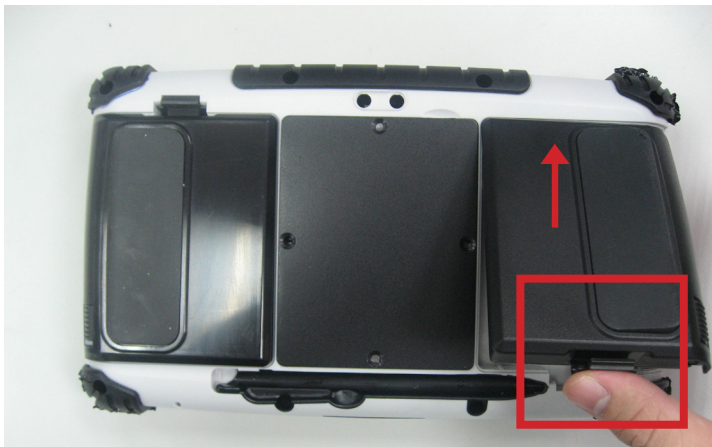


- ③ Press the latch down to fasten the battery on the tablet PC

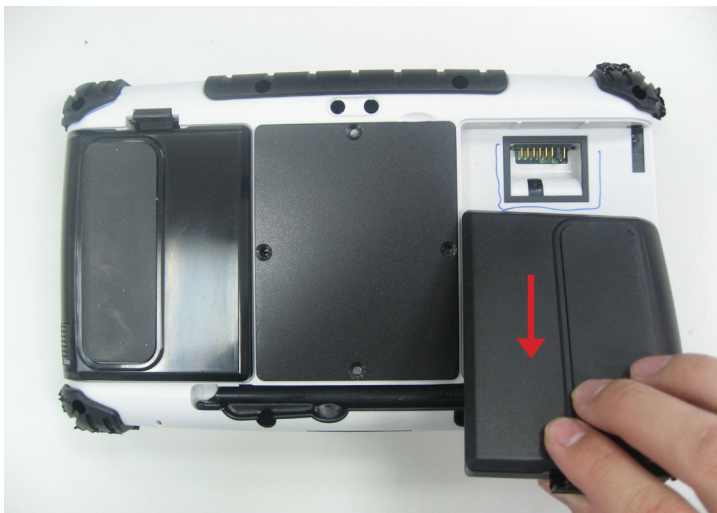
To remove the Battery



① Slide the latch up to release the battery cover



② Push up the lock from the tablet pc.



③ Take out the battery pack from the battery slot.

1.5 The Battery Light Signal Instruction

Charging procedure for the two battery packs. When the tablet pc is connected to the power source, the battery packs start charging.



1.5.1 Battery Charging Mechanism:

Balance of Battery Charging Mode:

Both the battery packs are at a low power level which is about 5%

- a. If the first battery's power level is 5% more than the second battery, the PC will charge the lower power battery first.
- b. If the first battery's power level is more than the second battery by less than 5%, the PC will charge both the batteries.

Dual Battery Charging Mode:

Both the battery packs are at a low power level which is about 10%

- c. If both the batteries' power level is below 10%, the PC will charge both the batteries together.
- d. If both the batteries' power level is more than 10%, the PC will change the charging mode to the balance charging mode.
- e. If one battery is fully charged, the other is at a low power level, the PC will charge the battery which is at a low power level.
- f. If both the batteries are fully charged, the PC will switch off the charging current.

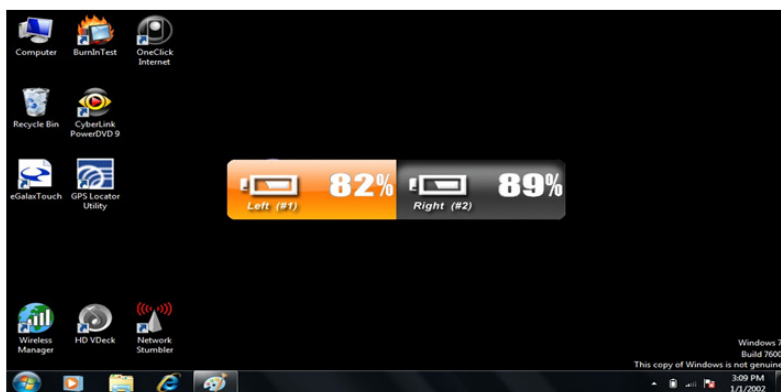
1.5.2. Battery Discharging Mechanism:

Battery discharging mechanism is showed as following:

- a. Left Battery / Right Battery are located at the rear side.



- b. The left battery status shows as discharged and the OSD indicator shows the discharging status as shown in the following pictures.



1.5.2. Battery Discharging Mechanism:



c. Give a long push to the <F3> button to switch the discharging status between left and right battery



d. The discharging status of the right battery is shown on both the screen and the OSD indicator.



e. Critical battery level: 3% below
The system is not allowed to switch the discharge status between left & right battery.

f. The left battery is discharging and the right battery is in the critical battery status.



g. The right battery is discharging and the left battery is in the critical battery status.

(L: red / R: green)



h. Both the left right batteries are in the critical battery status.

(L/R: both red)

Chapter 2

Using the Software

This Chapter will guide you how to operate the Tablet PC, including starting / shutting down the PC, and how to use the menu function including basic hardware function adjustment and the Hot Tab hotkey utility software that is very easy & helpful for operating the computer.

2.1 Turning the Tablet PC On and Off

2.1.1 Turning on the Tablet PC

- a. Place your tablet PC on a flat and stable surface or hold the tablet PC in your hand.



- b. Make sure the tablet PC is either connected with the AC power adapter or the batteries are charged up.
- c. Press the power button for at least 4 seconds to turn it on.

2.1.2 Turning off the Tablet PC

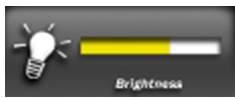
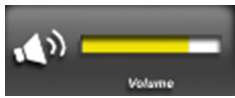




Turn off the tablet PC by using the "Shut Down" command of your operating system.



CAUTION: If you have to turn the tablet PC on again immediately after turning it off, please wait for at least five seconds. Turning the tablet PC off and on in rapid succession can damage the whole device.

2.2 How to use the software

Hot-Tab Hotkey Function

PUSH Menu Button	Function Description	Function Adjustment
1st Time	Show Current Brightness 	Click "Left/ Down" button to increase brightness (Or Drag by Touch) Click "Right/ Up" to decrease brightness(Or Drag by Touch) Click "OK" to save the changes and exit UI.
2nd Time	Show current Volume 	
3rd Time	Show current Battery Usage and Battery status for both the batteries 	
4th Time	Show the status of the Wireless communication function 	Use the touch button to select the wireless communication. Then select Enable/ Disable
5th Time	Show the software version of a. Hot TAB Utility version b. BIOS / EC version 	
PRESS for 4 sec	Lock/Unlock buttons Press for 4 seconds to Lock buttons**(not including Touch)	Press for 4 seconds to Unlock buttons 

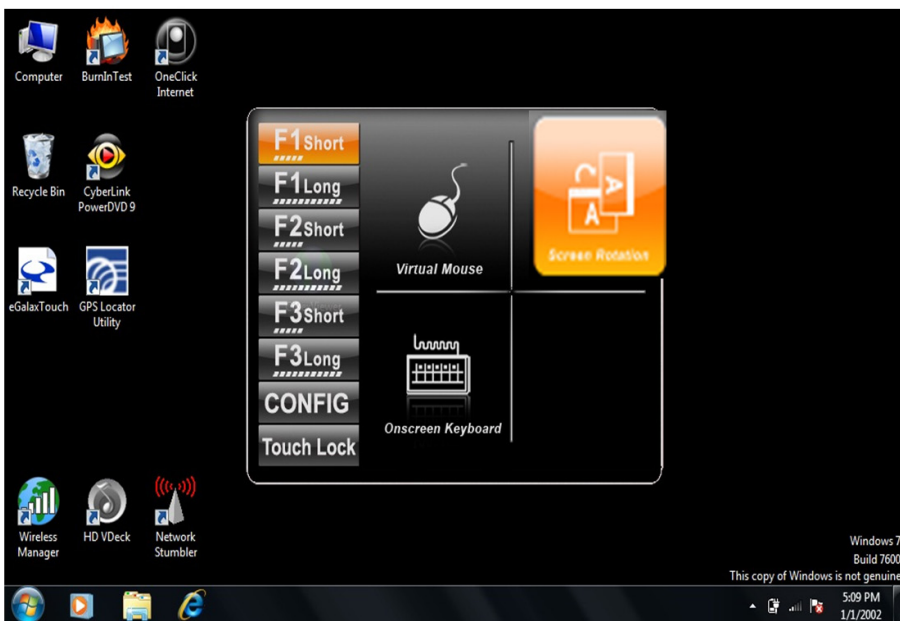
2.3 Hot TAB Software Utility Functions

F1 Hot TAB functions shows four functions

a. The first is a virtual mouse

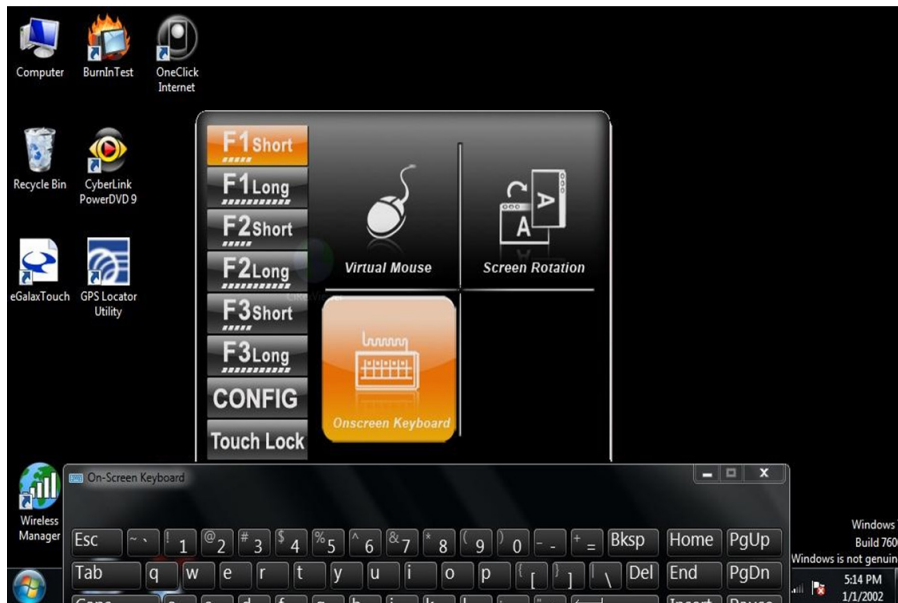


b. Screen rotation



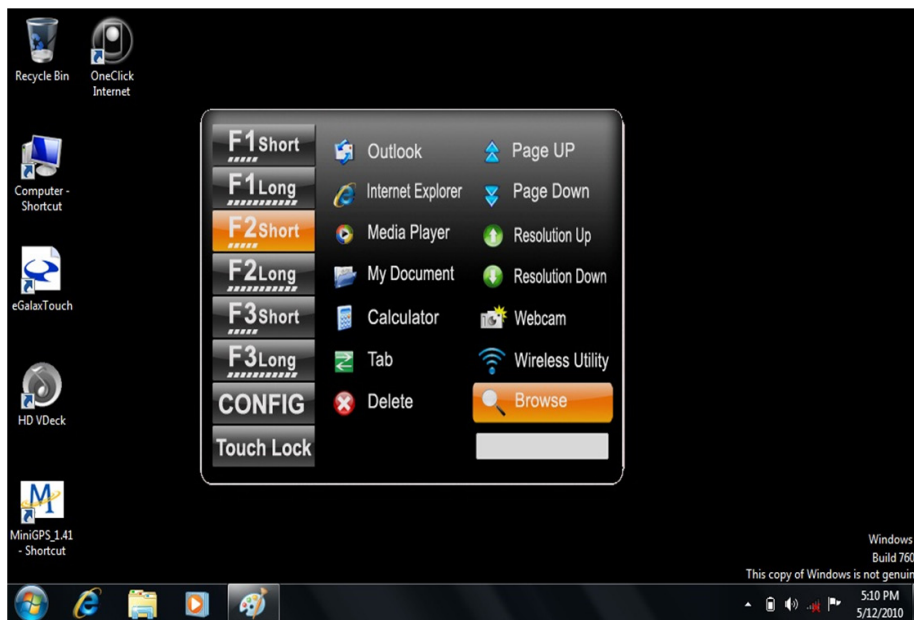
2.3 Hot TAB Software Utility Functions

c. Onscreen Keyboard



d. F2 and F3 hotkeys

You can use “browse” and select the desired program file.



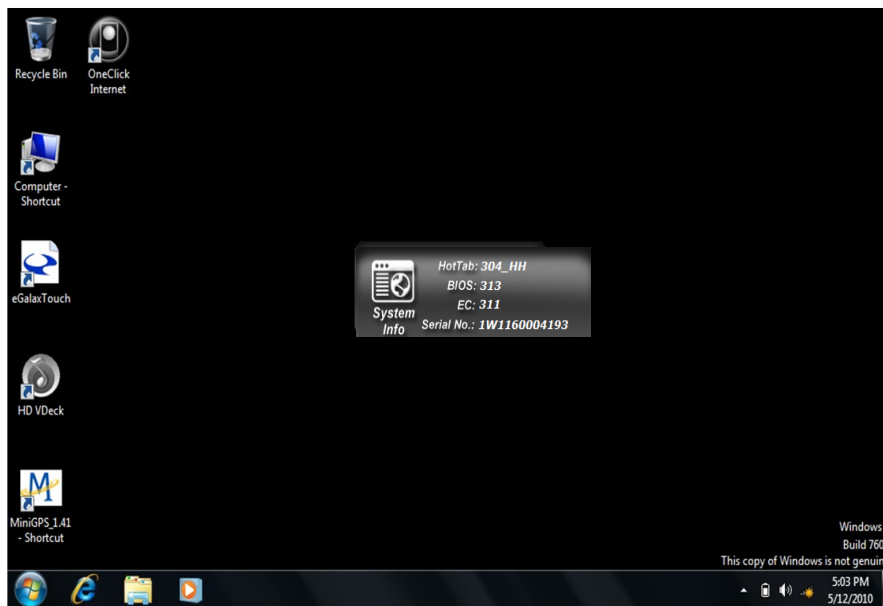
2.3 Hot TAB Software Utility Functions

e. Power Management Display System Information



f. System Information

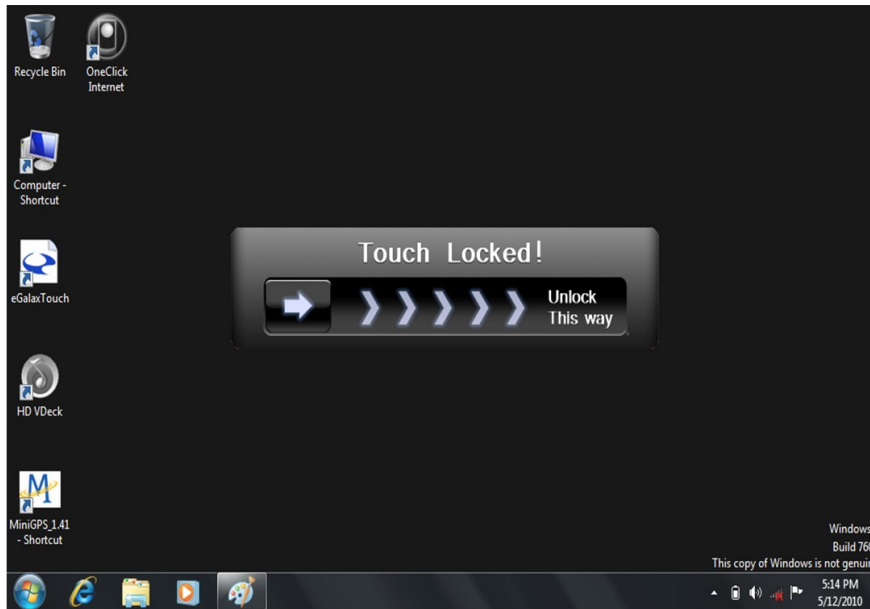
When you press menu for the 3rd time, you can see the system information.



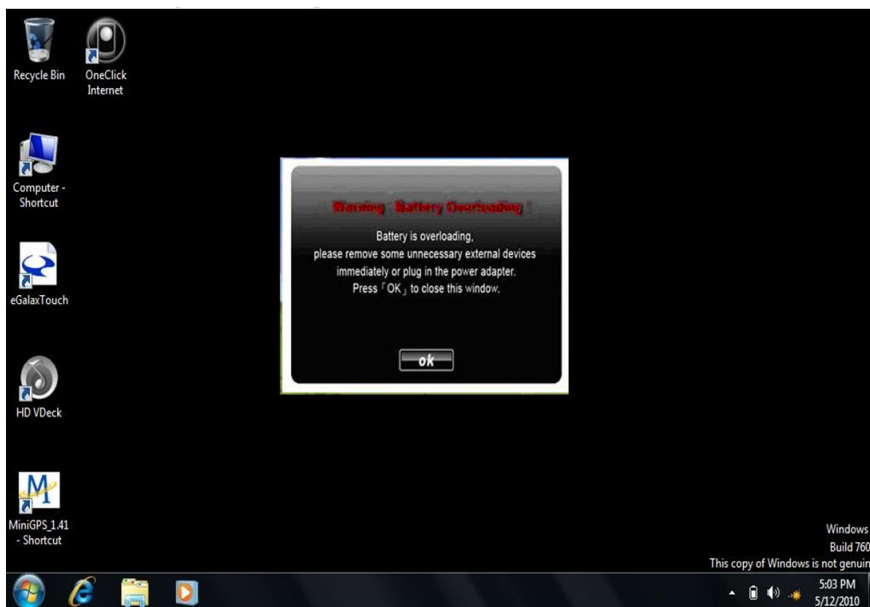
2.3 Hot TAB Software Utility Functions

g. Touch Lock:

Select the touch lock icon to lock the touchscreen. Use the onscreen slide to unlock.



h. Low battery warning notice:



2.3 Hot TAB Software Utility Functions

i. Camera Setup

The easiest way to reach the camera is through the function keys. Press F1 to assign functions.

Default for Webcam application is short press on F3 key.



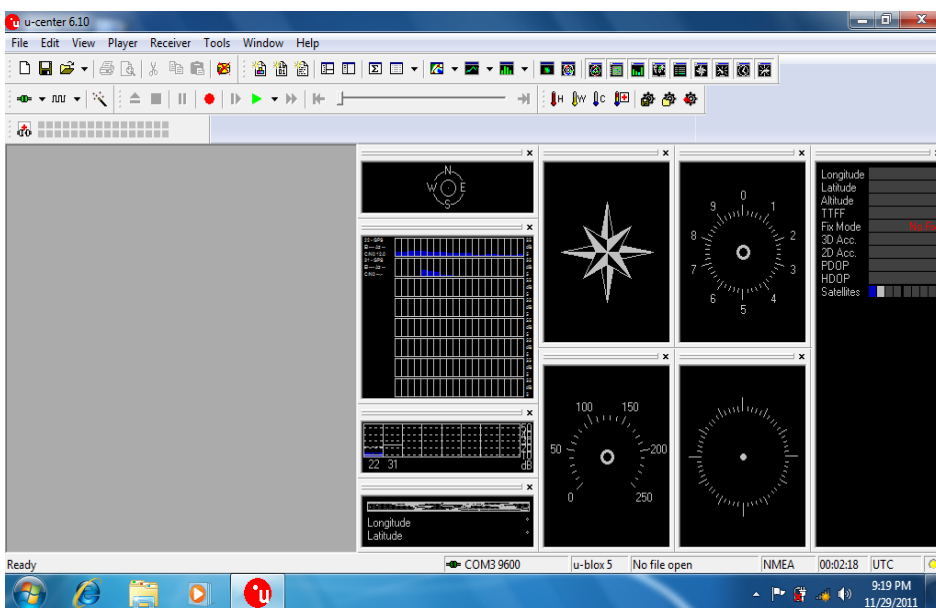
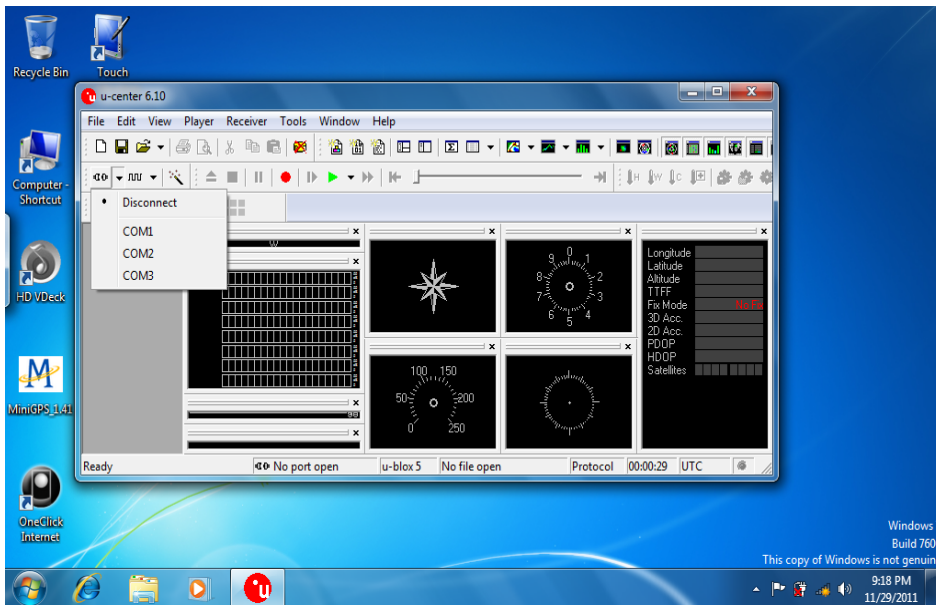
The icons at the top of the window:

- Video icon – starts filming a movie
- Camera icon – takes the shot
- Flash icon – toggles the LED light on/off
- File management icon – shows where you'll save the images. You should set this up before you start taking pictures or video, then once you take a shot it is automatically saved in that location.
- Return arrow icon – closes the camera application

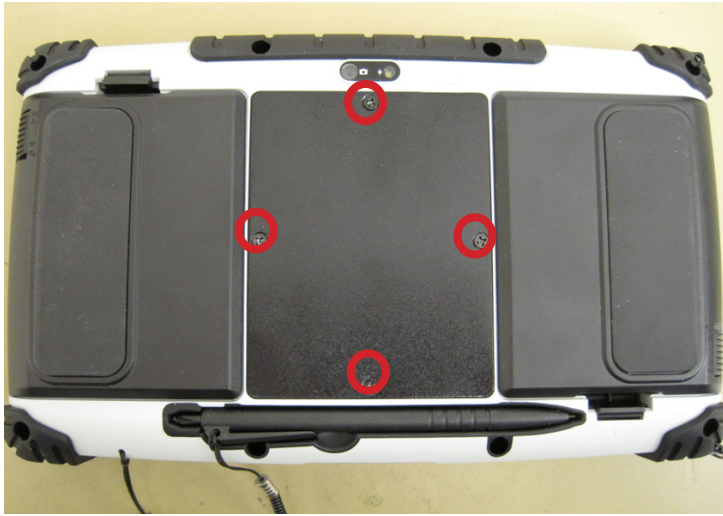
2.4 GPS Setup

- Click on "Menu" four times on the right keypad of the Algiz 7 and make sure that the "GPS" box is checked.
- Click on U-center – Shortcut on your desktop.
- Set the COM port to COM 3 and the baud rate to 9600.
- Done

Note! Only valid for Algiz 7 units with S/N starting at: 1W1170014211



2.5 SIM Installation guide



- a) Start by unscrewing the 4 screws on the back as described above, using a screwdriver.
- b) Gently open the right SIM card holder and insert your SIM card..



2.5 SIM Installation guide

c) Place the cover back in its original position and tighten the 4 screws and you are done.



2.6 WAN Software



- a) Insert the SIM card before proceeding.
- b) Click on "Menu" four times on the right keypad of the Algiz 7 and make sure that the box "3G" is checked.

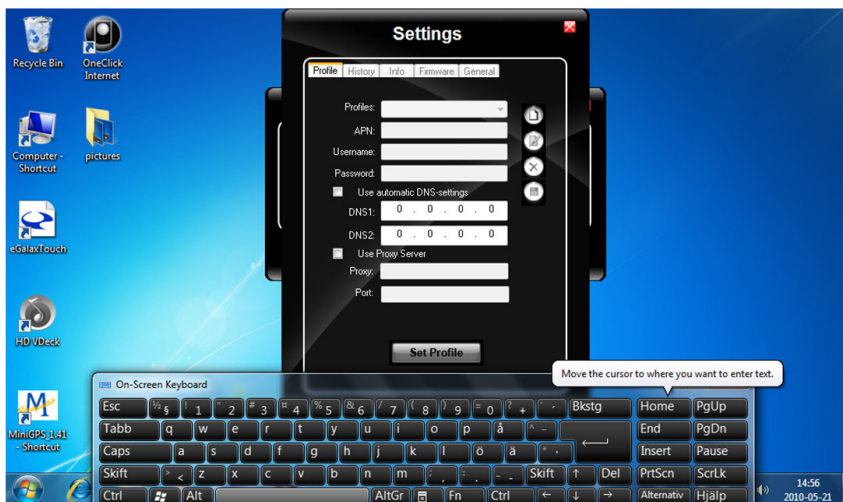


- c) Once the modem has been activated, click on "OneClick Internet" shortcut on your desktop.

- d) Press connect and the software will automatically load the required settings, please hold until it indicates connected.

- e) You are now connected and can use Internet Explorer to access the internet.

- f) If it does not load the correct settings, press on the button "Settings" and select the correct settings manually.



- g) Save the profile and connect again.

Chapter 3

Regulatory

3.1 Regulatory

3.1.1 FCC Compliance Statement

This device complies with part 15 of the FCC Rules. Operation is subject to the following two conditions:

1. This device may not cause harmful interference, and
2. This device must accept any interference received, including interference that may cause undesired operation.

3.1.2 FCC Warning

This equipment has been tested and found to comply with the limits for a Class B digital device, pursuant to Part 15 of the FCC Rules. These limits are designed to provide reasonable protection against harmful interference in a residential installation. This equipment generates, uses and can radiate radio frequency energy and, if not installed and used in accordance with the instructions, may cause harmful interference to radio communications. However, there is no guarantee that interference will not occur in a particular installation. If this equipment does cause harmful interference to radio or television reception, which can be determined by turning the equipment off and on, the user is encouraged to try to correct the interference by one or more of the following measures:

- Reorient or relocate the receiving antenna.
- Increase the separation between the equipment and the receiver.
- Connect the equipment into an outlet different from that to which the receiver is connected.
- Consult the dealer or an experienced radio/TV technician for help.

Caution:

To comply with the limits for an FCC Class B computing device, always use the shielded signal cord supplied with this unit. The Federal Communications Commission warns that change or modifications of the unit not expressly approved by the party responsible for compliance could void the user's authority to operate the equipment.

3.1.3 FCC RF Radiation Exposure

This equipment complies with FCC RF radiation exposure limits set forth for an uncontrolled environment. This device and its antenna must not be co-located or operating in conjunction with any other antenna or transmitter. To comply with FCC RF exposure compliance requirements, the antenna used for this transmitter must be installed to provide a separation distance of at least 20 cm from all persons and must not be co-located or operating in conjunction with any other antenna or transmitter.

3.1.4 CE Declaration of Conformity

This equipment is herewith confirmed to comply with the requirements set out in the Council Directive on the Approximation of the Laws of the Member States relating to Electromagnetic Compatibility (89/336/EEC), Low-voltage Directive (73/23/EEC) and the Amendment Directive (93/68/EEC), the procedures given in European Council Directive 99/5/EC and 89/336/EEC

3.2 Caring for your unit / Safe use

This chapter provides troubleshooting guidelines, including cleaning instructions and storage advice for your handheld product.

3.2.1 Maintenance

Please follow the instructions below for trouble-free use of the device:

- Take care to protect the screen from scratches. Only use a plastic pen designed for touchscreens or the stylus provided. Never use pens, pencils or other sharp objects on the screen.
- It is recommended that the screen is protected using protective film (one sheet of protective film is supplied with the product). Advantages of using protective film include the following:
 - Protects the screen from scratches and grooves.
 - More realistic feel when writing and touching
 - Protects the screen from damage caused by abrasion and foreign bodies.
 - Extends the lifespan of the touch screen.
 - Your handheld product screen is made from glass. Do not apply excessive force to the screen.
 - Protect your handheld product from severe temperature changes. When the temperature is high, do not leave the device on the dashboard of the vehicle and keep well away from any heat sources.
 - Do not use or store your handheld product in dirty, humid or wet conditions that are beyond the product specifications.
 - Use a soft cloth (e.g. cloth designed for lens cleaning) for cleaning your handheld product. If the screen surface gets dirty, clean using soapy water and a damp cloth.
 - To maximize battery life and performance, replace the battery periodically. The battery life depends on use.

3.2.2 Battery Safety Instructions

- No debris, combustibles or chemicals should be allowed near the battery while charging. Extra caution is required when charging the battery in non-commercial conditions.
- The battery should only be used in accordance with the instructions for use, storage and recharge as set out by this manual.
- Improper use of the battery may result in fire or explosion. The charging temperature of the battery ranges from 0°C to 40°C (32°F ~ 104°F).
- Do not use incompatible batteries or chargers. The use of incompatible batteries or chargers may result in risks such as fire, explosion, leaks, etc. If you have any question about batteries or the charger, contact Handheld.
- Do not attempt to disassemble, open, bend, modify, puncture, or smash the product or the battery.
- If you drop the device on a solid surface hard, the battery may overheat.
- Extra care must be taken to avoid short circuiting, contact a metal conductor to the battery terminals.
- Special attention must be paid to avoid modification, restoration, inserting foreign bodies into the battery, exposing the battery to water or other liquids, fire, explosion, and other risks.
- Do not allow children to handle the battery unsupervised. .
- Used batteries must be disposed of in accordance with local regulations.
- Do not burn the battery.
- If the battery has been swallowed, immediately contact a doctor.
- If the battery leaks, be careful not to allow the fluid to come into contact with skin or eyes. If battery fluid comes into contact with skin or eyes, rinse using plenty of water and seek immediate medical advice.
- If you suspect damage to the device or the battery, contact Handheld.

3.2.3 Cleaning

Cleaning the exterior

Use only detergents or cleaners dedicated for computers.

Screen

Use only detergents or cleaners dedicated for computers. Take care not to allow any excess liquid to enter the gaps around the screen. To avoid scratches, wipe using a non-abrasive dry cloth.

Scanner Window

Clean regularly using a lens cleaner. Clean regularly using a lens cleaner.

Connectors

1. Remove the battery
2. Soak the end of a swab with isopropyl alcohol and rub across the connector pins.
3. Be careful as to not leave any residue on the connectors.
4. This process should be repeated approximately three times.

Note: If isopropyl alcohol is not available, use computer cleaning detergent or a pencil eraser (rubber) taking care not to leave any foreign bodies at the pins.

Cradle

1. Remove the power cable from the cradle.
2. Soak the end of a swab with isopropyl alcohol and rub across the connector pins.
3. Be careful as to not leave any residue on the connectors.
4. Rub the connectors carefully ensuring that both sides of the connectors are fully cleaned; repeat three times.
5. Remove any foreign bodies inside the cradle using compressed air or similar.
6. Clean the exterior using computer cleaning detergents.

Contamination levels may vary depending on the users' operational environment; it is recommended that the device be cleaned regularly.