

SIMULATION

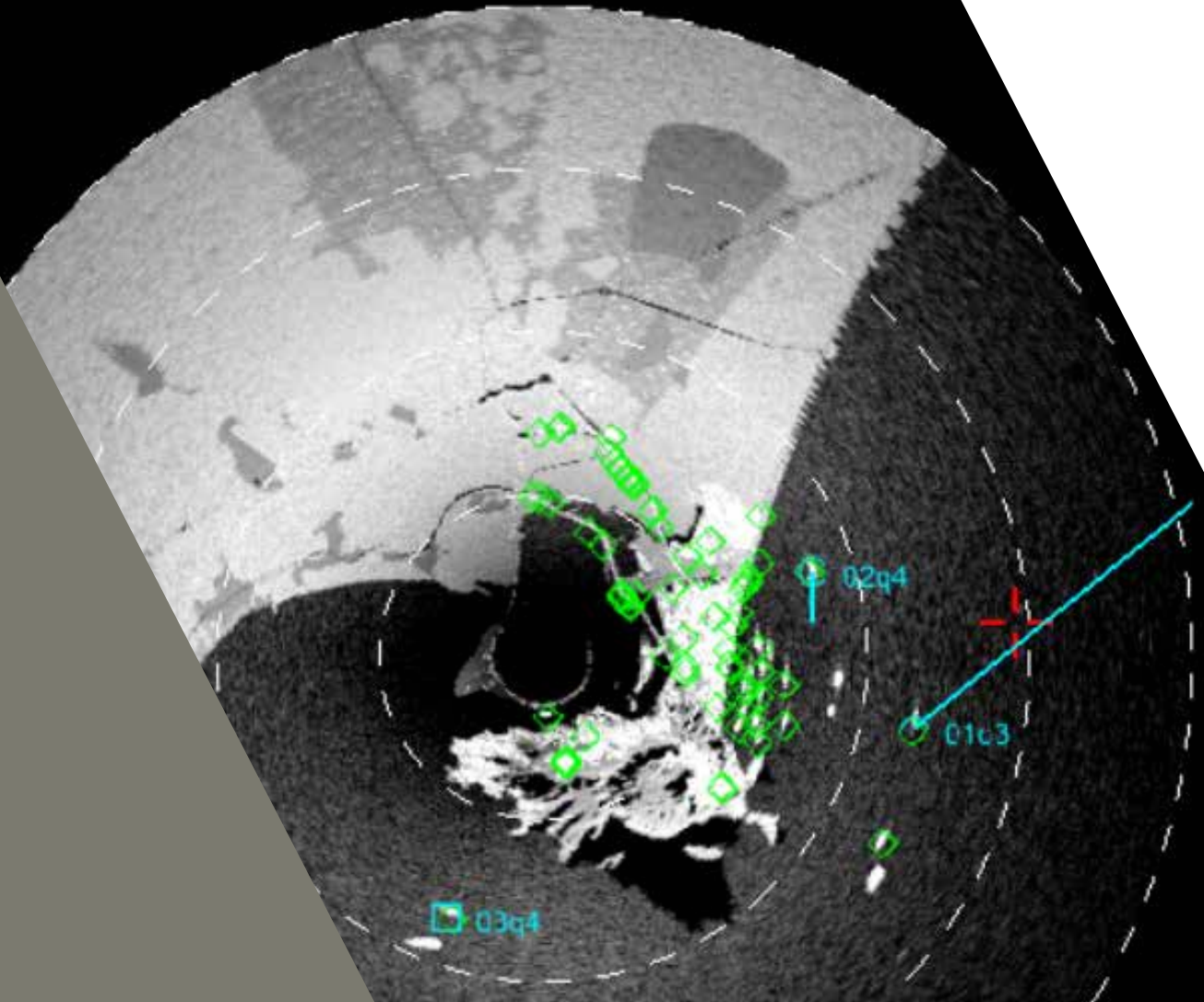
# ONDULUS RADAR

DEVELOP. EMULATE. SIMULATE

\ **Ondulus Radar** delivers the ability to add high-fidelity, high-performance, physics-based radar sensor simulation into a wide variety of research, design, and training applications.

10.0 nm

RBGM / GMTI / TWS



**PRESAGIS**  
MAKE IT REAL





